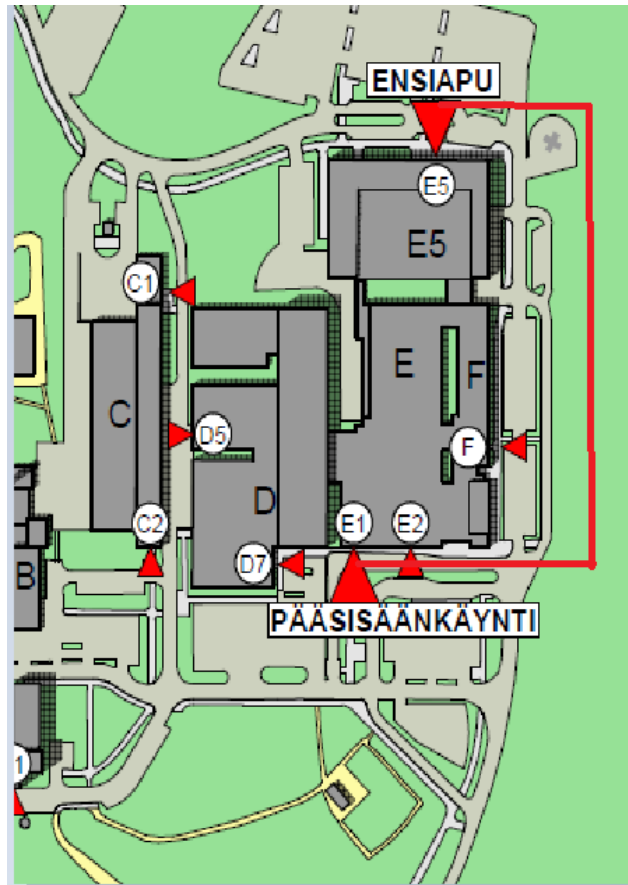


Entry after 7 pm through the emergency ward:



Kanta-Häme Central Hospital
Hämeenlinna unit
Radiology department
Ahvenistontie 20
13530 Hämeenlinna
Telephone 03 629 3068

Patient instructions for magnetic resonance imaging (MRI) scan



K-HKS 4589A_E 11.18

Kanta-Hämeen sairaanhoitopiirin ky. • 13530 Hämeenlinna • Puh. 03 6291

Hämeenlinnan yksikkö
Ahvenistontie 20
13530 HÄMEENLINNA
vaihte 03 6291

Riihimäen yksikkö
Kontiontie 77, 11120 RIIHIMÄKI
PL 140, 11101 RIIHIMÄKI
vaihte 019 744 51

Sinua kuunnellen..... 

Welcome to your MRI scan

You have an appointment for a **MRI scan** at the Kanta-Häme Central Hospital Hämeenlinna unit Radiology department.

Please arrive at the **Hämeenlinna unit radiology department** on the 1st floor at least 15 minutes before your appointment. Our office is open from 7:30 am to 3:20 pm.

Instructions for registration depending on your appointment time:

7:15 am -> no registration needed, proceed directly to waiting area

8 am to 3 pm -> register at the radiology department office

3 to 8:30 pm -> no registration needed

Saturdays -> no registration needed

From the radiology department lobby, follow the blue line to the MRI scan waiting area.

Note! The hospital main doors are locked after 7 pm. If your appointment time is after 7 pm, use the emergency ward entrance (see map on back) and cross the lobby to reach the radiology waiting area. From there, we will retrieve you to the scan.

Due to the magnetic field used in the scan, metal objects, watches, jewellery, piercings, bank cards etc. must be left in the designated locked container. Makeup may not be worn when imaging the head and neck area, as the pigments often contain metal.

In you are in possession of previously taken x-ray or MRI images of the area to be examined, please bring these with you.

If you are breastfeeding, contact the MRI unit tel. 03 629 3068.

Preliminary preparation

To investigate potential factors that could hinder or prevent the scan, you must fill in a **preliminary questionnaire** at home or the inpatient ward and bring it with you to the scan.

If you are accompanied by an escort, this person must also be eligible for the MRI.

You may eat and drink normally unless your scan concerns the abdomen area:

In the case of MRI scans for the gallbladder, liver, upper abdomen or abdomen, eating and drinking are not permitted for 6 hours before the scan.

You may take any medication normally.

In the case of **pelvimetry** and **prostate** scans, there are no preliminary preparations. If your scan concerns another area of the lower abdomen, avoid emptying your bladder immediately before the scan. Eating is permitted.

The examination does not involve x-rays. During the scan, you will be placed in the MRI machine, where you must remain completely motionless. During the scan, you will hear a loud clicking noise. An intravenous, non-iodinated agent may be used to highlight the imaged area. Be sure to reserve two hours for the scan, as your appointment may be delayed due to more pressing emergency examinations.